

# PEE BEE JAY DELICACIES MENU

---

☎ 078 494 0103

🌐 [letstalk@peebeejaydelicacies.org](mailto:letstalk@peebeejaydelicacies.org)



## LUNCH PACKS

---

Get ready made and packaged lunch packs with a choice sandwich, fruit, beverage and snacks together for a single price.



## TRADITIONAL AFRICAN FOOD

---

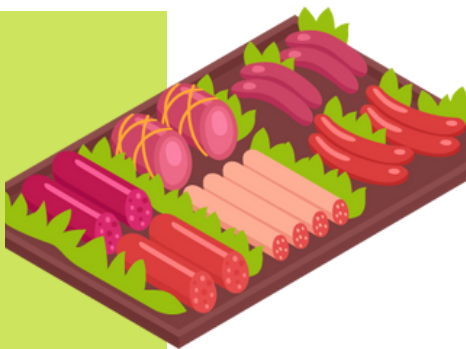
A full plate of traditionally home cooked food for individuals and families delivered straight to your door.



## PLATTERS

---

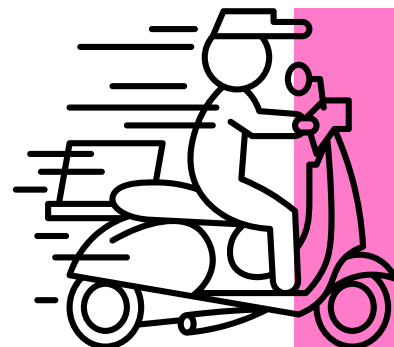
Party platters, conference platters, lunch platters available in multiple varieties according to the occasion.



## DELIVERY

---

ALL our products are eligible for delivery, FREE for households within a 20km radius



# LUNCH PACK OPTIONS

## SANDWICHES

---

Chicken Mayo

Ham and Cheese

Bacon and Cheese

Egg and Cheese

Mince

Lettuce and tomato

Cheese and Tomato

Avocado and egg (per  
season)

## BEVERAGES

---

Fizzy drinks

(440ml)

Juice box

Still water (500ml)

Sparkling water

(500ml)

## FRUITS

---

Apple

Pear

Peach

Grapes (100g)

Banana

Orange

Naartjie

Strawberries (100g)

Triangular sliced

watermelon

## SNACKS

---

Mini chips

-Dried fruits

-Energy bar

-Chocolate bar

-Pack of peanuts

and raisins

-Oreo's (4 pack)

-Pack of smarties

-Mini Cheddars

crackers

# LUNCH PACK PRICES

INCLUDES 1 DRINK 2 SNACKS AND 1 FRUIT

## **SINGLE:**

## **WEEKLY(5 DAYS)**

<i>Chicken Mayo</i>	<i>R55.00</i>	<i>Chicken Mayo</i>	<i>R270.00</i>
<i>Ham and Cheese</i>	<i>R59.00</i>	<i>Ham and Cheese</i>	<i>RR290.00</i>
<i>Bacon and Cheese</i>	<i>R69.99</i>	<i>Bacon and Cheese</i>	<i>R345.99</i>
<i>Egg and Cheese</i>	<i>R60.00</i>	<i>Egg and Cheese</i>	<i>R290.00</i>
<i>Mince</i>	<i>R65.99</i>	<i>Mince</i>	<i>R320.00</i>
<i>Lettuce and tomato</i>	<i>R65.55</i>	<i>Lettuce and tomato</i>	<i>R310.00</i>
<i>Cheese and Tomato</i>	<i>R75.99</i>	<i>Cheese and Tomato</i>	<i>R370.00</i>
<i>Avocado and egg (per season)</i>	<i>R85.99</i>	<i>Avocado and egg (per season)</i>	<i>R400.00</i>

# DINNER DASH

## STARCH

---

Pap/ Phuthu  
Rice (Brown/White)  
African Dumpling  
Samp  
Potato Wedges  
Creamy Mash  
Fries  
Spaghetti  
Macaroni  
Lasagne

## SALAD SIDES

---

Classic Chakalaka  
Coslaw  
Potato Salad  
Three bean salad  
Greek salad  
Spicy Salsa  
Beetroot salad  
Mushroom and green  
bean salad

## VEGETABLE SIDES

---

Mixed veg (carrots, broccoli,  
cauliflower, baby marrow,  
baby corn and green beans)  
Pumpkin/sweet potato  
Spinach  
(creamy/potato/plain)  
Fried cabbage  
Corn on a cob  
Veg Stir Fry (cabbage,  
carrot, onion, peppers,  
mushroom)

# DINNER DASH PRICES

## CHICKEN COMBOS

*(Grilled chicken/chicken stew)*

**SINGLE:**

R55.00

STARCH: 200g

CHICKEN: QUARTER

SALAD: 1

VEG: 1

**COUPLE:**

99.99

STARCH: 450g

CHICKEN: HALF

SALAD: 1

VEG: 2

**FAMILY of 3:**

R110.00

STARCH: 600g

CHICKEN: HALF

SALAD: 2

VEG: 2

**FAMILY of 4:**

R160.00

STARCH: 700g

CHICKEN: 3/4

SALAD: 2

VEG: 2

**FAMILY of 5:**

R200.00

STARCH: 800g

CHICKEN: FULL

SALAD: 1

VEG: 1

**FAMILY of 6:**

R215.00

STARCH: 900g

CHICKEN: FULL

SALAD: 2

VEG: 3

# DINNER DASH PRICES

## **BEEF COMBOS**

*\*(GS: Grilled steak, SF: beef stir-fry, BS: beef stew)*

### **SINGLE:**

R69.99

STARCH: 200g

BEEF: GS:1 SF:120g BS:360g

SALAD:1

VEG:1

### **COUPLE:**

R120.00

STARCH: 450g

BEEF: GS:2 SF:250g BS:450g

SALAD:1

VEG:2

### **FAMILY of 3:**

R150.00

STARCH:600g

BEEF: GS:3 SF:350g BS:600g

SALAD:2

VEG:2

### **FAMILY of 4:**

R200.00

STARCH:700g

BEEF: GS:4 SF:450g BS:700g

SALAD:2

VEG:2

### **FAMILY of 5:**

R269.99

STARCH:800

BEEF: GS:5 SF:550g BS:850g

SALAD:2

VEG:2

### **FAMILY of 6:**

R300.00

STARCH:900

BEEF: GS:6 SF:600g BS:950g

SALAD:2

VEG:3

# DINNER DASH PRICES

## PORK COMBOS

**SINGLE:**

R60.00

STARCH:200g

PORK: 1 chop

SALAD:1

VEG:1

**COUPLE:**

R89..99

STARCH:450g

PORK: 2 chops

SALAD:1

VEG:2

**FAMILY of 3:**

R99.99

STARCH:600

PORK: 3 chops

SALAD:2

VEG:2

**FAMILY of 4:**

R110.00

STARCH:700g

PORK: 4 chops

SALAD:2

VEG:2

**FAMILY of 5:**

R150.00

STARCH:800g

PORK: 5 chops

SALAD:2

VEG:2

**FAMILY of 6:**

R200.00

STARCH:900g

PORK: 6 chops

SALAD:2

VEG:3

# DINNER DASH PRICES

## LAMB COMBOS

### **SINGLE:**

R80.00

STARCH:200g

LAMB: 1 chop

SALAD:1

VEG:1

### **COUPLE:**

R99.99

STARCH:450g

LAMB: 2 chops

SALAD:1

VEG:2

### **FAMILY of 3:**

R120.00

STARCH:600

LAMB: 3 chops

SALAD:2

VEG:2

### **FAMILY of 4:**

R150.00

STARCH:700g

LAMB: 4 chops

SALAD:2

VEG:2

### **FAMILY of 5:**

R175.00

STARCH:800g

LAMB: 5 chops

SALAD:2

VEG:2

### **FAMILY of 6:**

R210.00

STARCH:900g

LAMB: 6 chops

SALAD:2

VEG:3



# DINNER DASH PRICES

## LASAGNE COMBOS

<b>SINGLE:</b>	R39.99
BEEF LASAGNE: 250g	
SALAD:1	
VEG:1	
<b>COUPLE:</b>	R59.99
BEEF LASAGNE: 400g	
SALAD:1	
VEG:2	
<b>FAMILY of 3:</b>	R75.00
BEEF LASAGNE: 600g	
SALAD:2	
VEG:2	
<b>FAMILY of 4:</b>	R89.99
BEEF LASAGNE:700g	
SALAD:2	
VEG:2	
<b>FAMILY of 5:</b>	R100.00
BEEF LASAGNE:800g	
SALAD:2	
VEG:2	
<b>FAMILY of 6:</b>	R150.00
BEEF LASAGNE: 900g	
SALAD:2	
VEG:3	

# **PLATTER PRICES**

**ALL PLATTERS ACCOMODATE 10 PAX**

## ***PLATTER OPTIONS***

***MEAT PLATTER*** *R499.99*

***SEAFOOD PLATTER*** *R899.99*

***VEGETERIAN PLATTER*** *R249.99*

***CHEESE PLATTER*** *R399.99*

***COLD MEAT PLATTER*** *R399.99*

***COMBO PLATTER*** *R379.99*

***PASTRY PLATTER*** *R289.99*